
E RecSearch Report

[GeoLens by GeoSearch](#)

Target Property:

SH 9 G-12-C Bridge Replacement

CO-9

Alma, Park County, Colorado 80440

No regulatory records were reported for the project bridge site. Four adjacent mine sites had records. They are former metallic mining sites (gold, silver) but now closed and appear to be used as gravel and/or stone quarries. None of these sites appear to have affected the bridge project site directly from, for example, disposal of mine waste. However, the close proximity of the mining operations could have affected heavy metal surface deposits which may cause elevated heavy metal content of ground water. Should dewatering be necessary, ground water sampling and analysis should be performed as part of the decision whether to dewater or consider alternate means to work below the water table.

Prepared For:

Colorado Department of Transportation

Order #: 163312

Job #: 403650

Project #: FBR R200-266

PO #: SH 9 G-12-C MP 71

Date: 03/29/2021

Table of Contents

<i>Target Property Summary</i>	1
<i>Database Summary</i>	2
<i>Database Radius Summary</i>	6
<i>Radius Map</i>	10
<i>Ortho Map</i>	12
<i>Topographic Map</i>	13
<i>Located Sites Summary</i>	14
<i>Site Summary By Database</i>	15
<i>Elevation Summary</i>	16
<i>Unlocated Sites Summary</i>	24
<i>Environmental Records Definitions</i>	25
<i>Unlocatable Report</i>	See Attachment
<i>Zip Report</i>	See Attachment

Disclaimer

This report was designed by GeoSearch to meet or exceed the records search requirements of the All Appropriate Inquiries Rule (40 CFR § 312.26) and the current version of the ASTM International E1527, Standard Practice for Environmental Site Assessments: Phase I Environmental Site Assessment Process or, if applicable, the custom requirements requested by the entity that ordered this report. The records and databases of records used to compile this report were collected from various federal, state and local governmental entities. It is the goal of GeoSearch to meet or exceed the 40 CFR § 312.26 and E1527 requirements for updating records by using the best available technology. GeoSearch contacts the appropriate governmental entities on a recurring basis. Depending on the frequency with which a record source or database of records is updated by the governmental entity, the data used to prepare this report may be updated monthly, quarterly, semi-annually, or annually.

The information provided in this report was obtained from a variety of public sources. GeoSearch cannot ensure and makes no warranty or representation as to the accuracy, reliability, quality, errors occurring from data conversion or the customer's interpretation of this report. This report was made by GeoSearch for exclusive use by its clients only. Therefore, this report may not contain sufficient information for other purposes or parties. GeoSearch and its partners, employees, officers And independent contractors cannot be held liable For actual, incidental, consequential, special or exemplary damages suffered by a customer resulting directly or indirectly from any information provided by GeoSearch.

Target Property Summary

Target Property Information

SH 9 G-12-C Bridge Replacement

CO-9

Alma, Colorado 80440

Coordinates

Point (-106.06558, 39.294857)

10,385 feet above sea level

USGS Quadrangle

Alma, CO

Geographic Coverage Information

County/Parish: Park (CO)

ZipCode(s):

Fairplay CO: 80440

Database Summary

FEDERAL LISTING

Standard Environmental Records

Database	Acronym	Locatable	Unlocatable	Search Radius (miles)
EMERGENCY RESPONSE NOTIFICATION SYSTEM	ERNSCO	0	0	TP/AP
FEDERAL ENGINEERING INSTITUTIONAL CONTROL SITES	EC	0	0	TP/AP
LAND USE CONTROL INFORMATION SYSTEM	LUCIS	0	0	TP/AP
RCRA SITES WITH CONTROLS	RCRASC	0	0	TP/AP
RESOURCE CONSERVATION & RECOVERY ACT - GENERATOR	RCRAGR08	0	0	0.1250
RESOURCE CONSERVATION & RECOVERY ACT - NON-GENERATOR	RCRANGR08	0	0	0.1250
BROWNFIELDS MANAGEMENT SYSTEM	BF	0	0	0.5000
DELISTED NATIONAL PRIORITIES LIST	DNPL	0	0	0.5000
NO LONGER REGULATED RCRA NON-CORRACTS TSD FACILITIES	NLRRCRAT	0	0	0.5000
RESOURCE CONSERVATION & RECOVERY ACT - NON-CORRACTS TREATMENT, STORAGE & DISPOSAL FACILITIES	RCRAT	0	0	0.5000
SUPERFUND ENTERPRISE MANAGEMENT SYSTEM	SEMS	0	0	0.5000
SUPERFUND ENTERPRISE MANAGEMENT SYSTEM ARCHIVED SITE INVENTORY	SEMSARCH	0	0	0.5000
NATIONAL PRIORITIES LIST	NPL	0	0	1.0000
NO LONGER REGULATED RCRA CORRECTIVE ACTION FACILITIES	NLRRCRAC	0	0	1.0000
PROPOSED NATIONAL PRIORITIES LIST	PNPL	0	0	1.0000
RESOURCE CONSERVATION & RECOVERY ACT - CORRECTIVE ACTION FACILITIES	RCRAC	0	0	1.0000
RESOURCE CONSERVATION & RECOVERY ACT - SUBJECT TO CORRECTIVE ACTION FACILITIES	RCRASUBC	0	0	1.0000
SUB-TOTAL		0	0	

Additional Environmental Records

Database	Acronym	Locatable	Unlocatable	Search Radius (miles)
AEROMETRIC INFORMATION RETRIEVAL SYSTEM / AIR FACILITY SUBSYSTEM	AIRSAFS	0	0	TP/AP
BIENNIAL REPORTING SYSTEM	BRS	0	0	TP/AP
CERCLIS LIENS	SFLIENS	0	0	TP/AP
CLANDESTINE DRUG LABORATORY LOCATIONS	CDL	0	0	TP/AP
EPA DOCKET DATA	DOCKETS	0	0	TP/AP
ENFORCEMENT AND COMPLIANCE HISTORY INFORMATION	ECHOR08	0	0	TP/AP
FACILITY REGISTRY SYSTEM	FRSCO	0	0	TP/AP

Database Summary

Database	Acronym	Locatable	Unlocatable	Search Radius (miles)
HAZARDOUS MATERIALS INCIDENT REPORTING SYSTEM	HMIRSR08	0	0	TP/AP
HAZARDOUS WASTE COMPLIANCE DOCKET FACILITIES	HWCD	0	0	TP/AP
INTEGRATED COMPLIANCE INFORMATION SYSTEM (FORMERLY DOCKETS)	ICIS	0	0	TP/AP
INTEGRATED COMPLIANCE INFORMATION SYSTEM NATIONAL POLLUTANT DISCHARGE ELIMINATION SYSTEM	ICISNPDES	0	0	TP/AP
MATERIAL LICENSING TRACKING SYSTEM	MLTS	0	0	TP/AP
NATIONAL POLLUTANT DISCHARGE ELIMINATION SYSTEM	NPDESR08	0	0	TP/AP
PCB ACTIVITY DATABASE SYSTEM	PADS	0	0	TP/AP
PERMIT COMPLIANCE SYSTEM	PCSR08	0	0	TP/AP
SEMS LIEN ON PROPERTY	SEMCLIENS	0	0	TP/AP
SSEHRI PFAS CONTAMINATION SITES	SSEHRIPFAS	0	0	TP/AP
SECTION SEVEN TRACKING SYSTEM	SSTS	0	0	TP/AP
TOXIC SUBSTANCE CONTROL ACT INVENTORY	TSCA	0	0	TP/AP
TOXICS RELEASE INVENTORY	TRI	0	0	TP/AP
ALTERNATIVE FUELING STATIONS	ALTFUELS	0	0	0.2500
FEMA OWNED STORAGE TANKS	FEMAUST	0	0	0.2500
HISTORICAL GAS STATIONS	HISTPST	0	0	0.2500
INTEGRATED COMPLIANCE INFORMATION SYSTEM DRYCLEANERS	ICISCLEANERS	0	0	0.2500
MINE SAFETY AND HEALTH ADMINISTRATION MASTER INDEX FILE	MSHA	2	0	0.2500
MINERAL RESOURCE DATA SYSTEM	MRDS	2	0	0.2500
OPEN DUMP INVENTORY	ODI	0	0	0.5000
SURFACE MINING CONTROL AND RECLAMATION ACT SITES	SMCRA	0	0	0.5000
URANIUM MILL TAILINGS RADIATION CONTROL ACT SITES	USUMTRCA	0	0	0.5000
DEPARTMENT OF DEFENSE SITES	DOD	0	0	1.0000
FORMER MILITARY NIKE MISSILE SITES	NMS	0	0	1.0000
FORMERLY USED DEFENSE SITES	FUDS	0	0	1.0000
FORMERLY UTILIZED SITES REMEDIAL ACTION PROGRAM	FUSRAP	0	0	1.0000
RECORD OF DECISION SYSTEM	RODS	0	0	1.0000
SUB-TOTAL		4	0	

Database Summary

STATE (CO) LISTING

Standard Environmental Records

Database	Acronym	Locatable	Unlocatable	Search Radius (miles)
ENVIRONMENTAL REAL COVENANTS LIST	COVENANTS	0	0	TP/AP
HAZARDOUS WASTE SITES- GENERATOR	HWSG	0	0	0.1250
ABOVEGROUND STORAGE TANK FACILITIES	AST	0	0	0.2500
UNDERGROUND STORAGE TANK FACILITIES	UST	0	0	0.2500
COLORADO BROWNFIELD SITES	BF	0	0	0.5000
HISTORICAL SOLID WASTE LANDFILLS	HISTSWLF	0	0	0.5000
LEAKING STORAGE TANK FACILITIES	LST	0	0	0.5000
LEAKING UNDERGROUND STORAGE TANKS TRUST FUND SITES	LUSTTRUST	0	0	0.5000
SOLID WASTE FACILITIES	SWF	0	0	0.5000
VOLUNTARY CLEANUP AND REDEVELOPMENT PROGRAM SITES	VCRA	0	0	0.5000
HAZARDOUS WASTE SITES- CORRECTIVE ACTION	HWSCA	0	0	1.0000
SUPERFUND SITES	SF	0	0	1.0000
SUB-TOTAL		0	0	

Additional Environmental Records

Database	Acronym	Locatable	Unlocatable	Search Radius (miles)
AIR POLLUTION CONTROL DIVISION PERMITTED FACILITIES	APCDP	0	0	TP/AP
ASBESTOS ABATEMENT AND DEMOLITION PROJECTS	ASBESTOS	0	0	TP/AP
COLORADO DISCHARGE PERMIT SYSTEM FACILITIES	CDPS	0	0	TP/AP
SPILLS LISTING	SPILLS	0	0	TP/AP
DRY CLEANING FACILITIES	CLEANERS	0	0	0.2500
HAZARDOUS WASTE SITES- TREATMENT, STORAGE & DISPOSAL	HWSTSD	0	0	0.5000
METHANE GAS STUDY SITES	METHANESITES	0	0	0.5000
REGISTERED RECYCLING FACILITIES	RECYCLERS	0	0	0.5000
URANIUM MILL TAILINGS SITES	UMTS	0	0	0.5000
SUB-TOTAL		0	0	

Database Summary

TRIBAL LISTING

Standard Environmental Records

Database	Acronym	Locatable	Unlocatable	Search Radius (miles)
UNDERGROUND STORAGE TANKS ON TRIBAL LANDS	USTR08	0	0	0.2500
LEAKING UNDERGROUND STORAGE TANKS ON TRIBAL LANDS	LUSTR08	0	0	0.5000
OPEN DUMP INVENTORY ON TRIBAL LANDS	ODINDIAN	0	0	0.5000

SUB-TOTAL		0	0	
-----------	--	---	---	--

Additional Environmental Records

Database	Acronym	Locatable	Unlocatable	Search Radius (miles)
INDIAN RESERVATIONS	INDIANRES	0	0	1.0000

SUB-TOTAL		0	0	
-----------	--	---	---	--

TOTAL		4	0	
-------	--	---	---	--

Database Radius Summary

FEDERAL LISTING

Standard environmental records are displayed in **bold**.

Acronym	Search Radius (miles)	TP/AP (0 - 0.02)	1/8 Mile (> TP/AP)	1/4 Mile (> 1/8)	1/2 Mile (> 1/4)	1 Mile (> 1/2)	> 1 Mile	Total
AIRSAFS	0.0200	0	NS	NS	NS	NS	NS	0
BRS	0.0200	0	NS	NS	NS	NS	NS	0
CDL	0.0200	0	NS	NS	NS	NS	NS	0
DOCKETS	0.0200	0	NS	NS	NS	NS	NS	0
EC	0.0200	0	NS	NS	NS	NS	NS	0
ECHOR08	0.0200	0	NS	NS	NS	NS	NS	0
ERNSCO	0.0200	0	NS	NS	NS	NS	NS	0
FRSCO	0.0200	0	NS	NS	NS	NS	NS	0
HMIRSR08	0.0200	0	NS	NS	NS	NS	NS	0
HWCD	0.0200	0	NS	NS	NS	NS	NS	0
ICIS	0.0200	0	NS	NS	NS	NS	NS	0
ICISNPDES	0.0200	0	NS	NS	NS	NS	NS	0
LUCIS	0.0200	0	NS	NS	NS	NS	NS	0
MLTS	0.0200	0	NS	NS	NS	NS	NS	0
NPDES08	0.0200	0	NS	NS	NS	NS	NS	0
PADS	0.0200	0	NS	NS	NS	NS	NS	0
PCSR08	0.0200	0	NS	NS	NS	NS	NS	0
RCRASC	0.0200	0	NS	NS	NS	NS	NS	0
SEMSLIENS	0.0200	0	NS	NS	NS	NS	NS	0
SFLIENS	0.0200	0	NS	NS	NS	NS	NS	0
SSEHRIPFAS	0.0200	0	NS	NS	NS	NS	NS	0
SSTS	0.0200	0	NS	NS	NS	NS	NS	0
TRI	0.0200	0	NS	NS	NS	NS	NS	0
TSCA	0.0200	0	NS	NS	NS	NS	NS	0
RCRAGR08	0.1250	0	0	NS	NS	NS	NS	0
RCRANGR08	0.1250	0	0	NS	NS	NS	NS	0
ALTFUELS	0.2500	0	0	0	NS	NS	NS	0
FEMAUST	0.2500	0	0	0	NS	NS	NS	0
HISTPST	0.2500	0	0	0	NS	NS	NS	0
ICISCLEANERS	0.2500	0	0	0	NS	NS	NS	0
MRDS	0.2500	0	0	2	NS	NS	NS	2
MSHA	0.2500	0	0	2	NS	NS	NS	2
BF	0.5000	0	0	0	0	NS	NS	0
DNPL	0.5000	0	0	0	0	NS	NS	0
NLRRCRAT	0.5000	0	0	0	0	NS	NS	0

Database Radius Summary

Acronym	Search Radius (miles)	TP/AP (0 - 0.02)	1/8 Mile (> TP/AP)	1/4 Mile (> 1/8)	1/2 Mile (> 1/4)	1 Mile (> 1/2)	> 1 Mile	Total
ODI	0.5000	0	0	0	0	NS	NS	0
RCRAT	0.5000	0	0	0	0	NS	NS	0
SEMS	0.5000	0	0	0	0	NS	NS	0
SEMSARCH	0.5000	0	0	0	0	NS	NS	0
SMCRA	0.5000	0	0	0	0	NS	NS	0
USUMTRCA	0.5000	0	0	0	0	NS	NS	0
DOD	1.0000	0	0	0	0	0	NS	0
FUDS	1.0000	0	0	0	0	0	NS	0
FUSRAP	1.0000	0	0	0	0	0	NS	0
NLRRCRAC	1.0000	0	0	0	0	0	NS	0
NMS	1.0000	0	0	0	0	0	NS	0
NPL	1.0000	0	0	0	0	0	NS	0
PNPL	1.0000	0	0	0	0	0	NS	0
RCRAC	1.0000	0	0	0	0	0	NS	0
RCRASUBC	1.0000	0	0	0	0	0	NS	0
RODS	1.0000	0	0	0	0	0	NS	0
SUB-TOTAL		0	0	4	0	0	0	4

Database Radius Summary

STATE (CO) LISTING

Standard environmental records are displayed in **bold**.

Acronym	Search Radius (miles)	TP/AP (0 - 0.02)	1/8 Mile (> TP/AP)	1/4 Mile (> 1/8)	1/2 Mile (> 1/4)	1 Mile (> 1/2)	> 1 Mile	Total
APCDP	0.0200	0	NS	NS	NS	NS	NS	0
ASBESTOS	0.0200	0	NS	NS	NS	NS	NS	0
CDPS	0.0200	0	NS	NS	NS	NS	NS	0
COVENANTS	0.0200	0	NS	NS	NS	NS	NS	0
SPILLS	0.0200	0	NS	NS	NS	NS	NS	0
HWSG	0.1250	0	0	NS	NS	NS	NS	0
AST	0.2500	0	0	0	NS	NS	NS	0
CLEANERS	0.2500	0	0	0	NS	NS	NS	0
UST	0.2500	0	0	0	NS	NS	NS	0
BF	0.5000	0	0	0	0	NS	NS	0
HISTSWLF	0.5000	0	0	0	0	NS	NS	0
HWSTSD	0.5000	0	0	0	0	NS	NS	0
LST	0.5000	0	0	0	0	NS	NS	0
LUSTTRUST	0.5000	0	0	0	0	NS	NS	0
METHANESITES	0.5000	0	0	0	0	NS	NS	0
RECYCLERS	0.5000	0	0	0	0	NS	NS	0
SWF	0.5000	0	0	0	0	NS	NS	0
UMTS	0.5000	0	0	0	0	NS	NS	0
VCRA	0.5000	0	0	0	0	NS	NS	0
HWSCA	1.0000	0	0	0	0	0	NS	0
SF	1.0000	0	0	0	0	0	NS	0
SUB-TOTAL		0	0	0	0	0	0	0

Database Radius Summary

TRIBAL LISTING

Standard environmental records are displayed in **bold**.

Acronym	Search Radius (miles)	TP/AP (0 - 0.02)	1/8 Mile (> TP/AP)	1/4 Mile (> 1/8)	1/2 Mile (> 1/4)	1 Mile (> 1/2)	> 1 Mile	Total
USTR08	0.2500	0	0	0	NS	NS	NS	0
LUSTR08	0.5000	0	0	0	0	NS	NS	0
ODINDIAN	0.5000	0	0	0	0	NS	NS	0
INDIANRES	1.0000	0	0	0	0	0	NS	0

SUB-TOTAL		0	0	0	0	0	0	0
------------------	--	----------	----------	----------	----------	----------	----------	----------

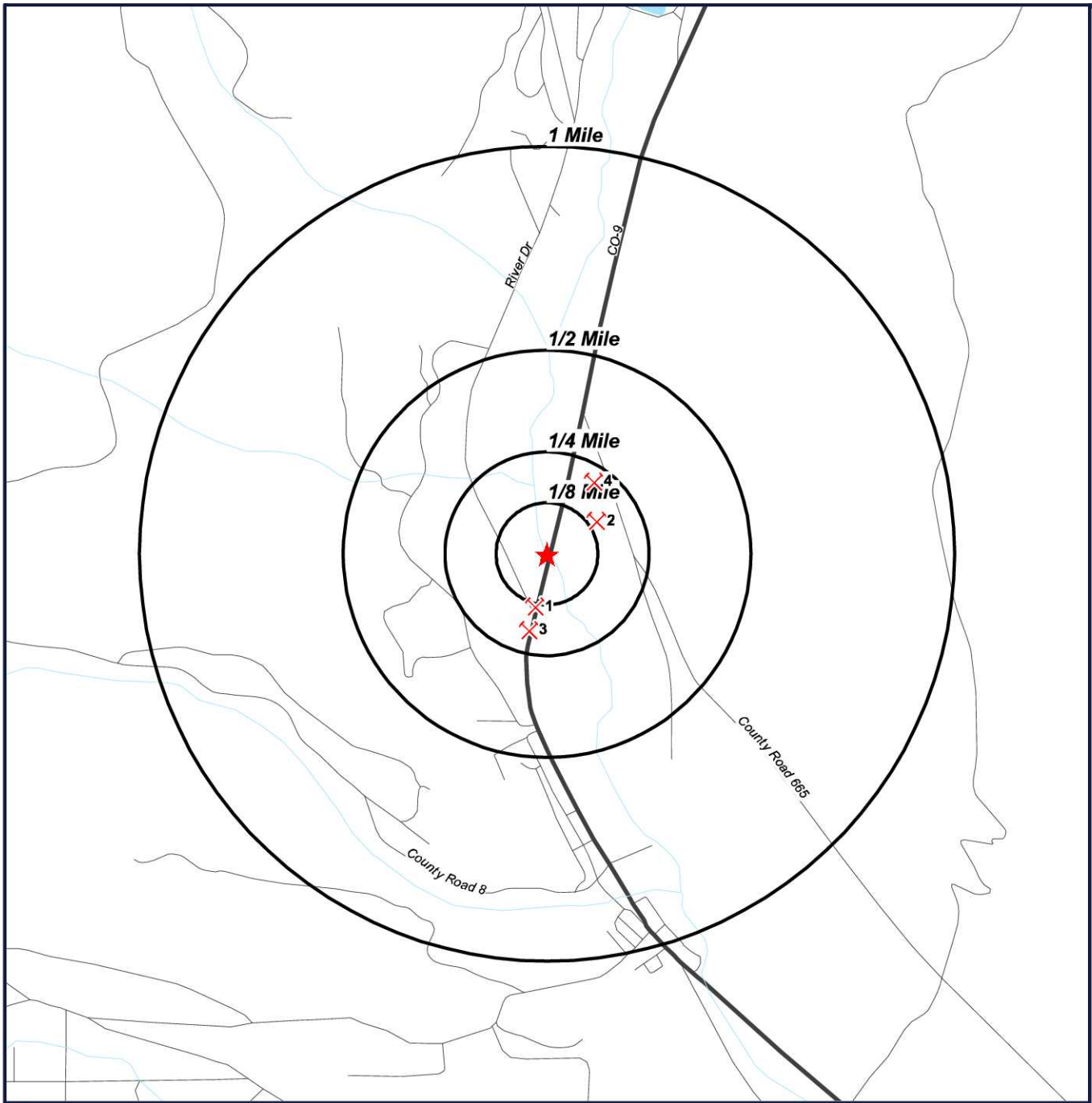
TOTAL		0	0	4	0	0	0	4
--------------	--	----------	----------	----------	----------	----------	----------	----------

NOTES:

NS = NOT SEARCHED

TP/AP = TARGET PROPERTY/ADJACENT PROPERTY

Radius Map 1

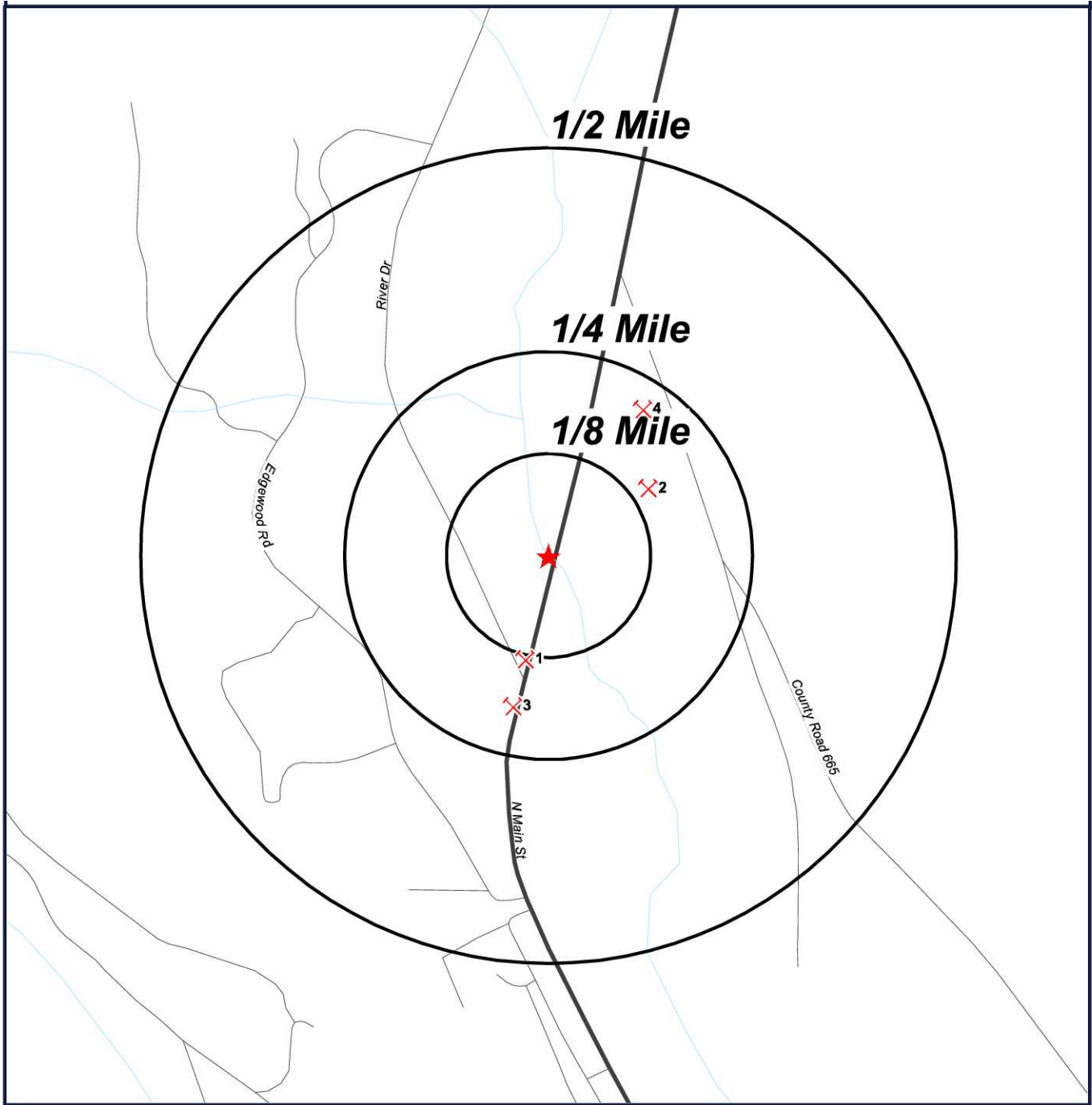


- ★ Target Property (TP)
- ✕ MSHA
- ✕ MRDS

**SH 9 G-12-C Bridge
Replacement
CO-9
Alma, Colorado
80440**



Radius Map 2

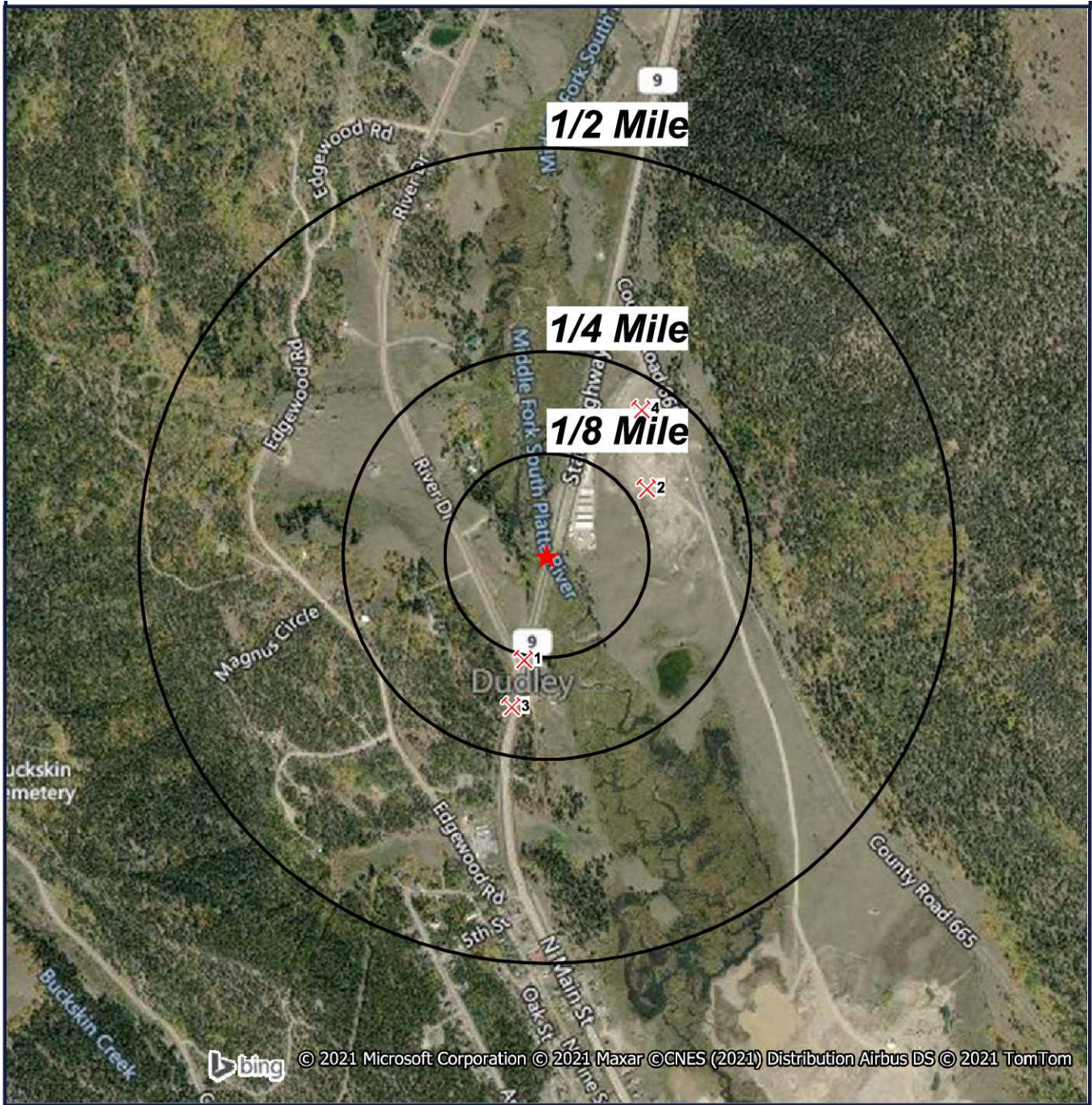


- ★ Target Property (TP)
- ✕ MSHA
- ✕ MRDS

**SH 9 G-12-C Bridge
Replacement
CO-9
Alma, Colorado
80440**



Ortho Map



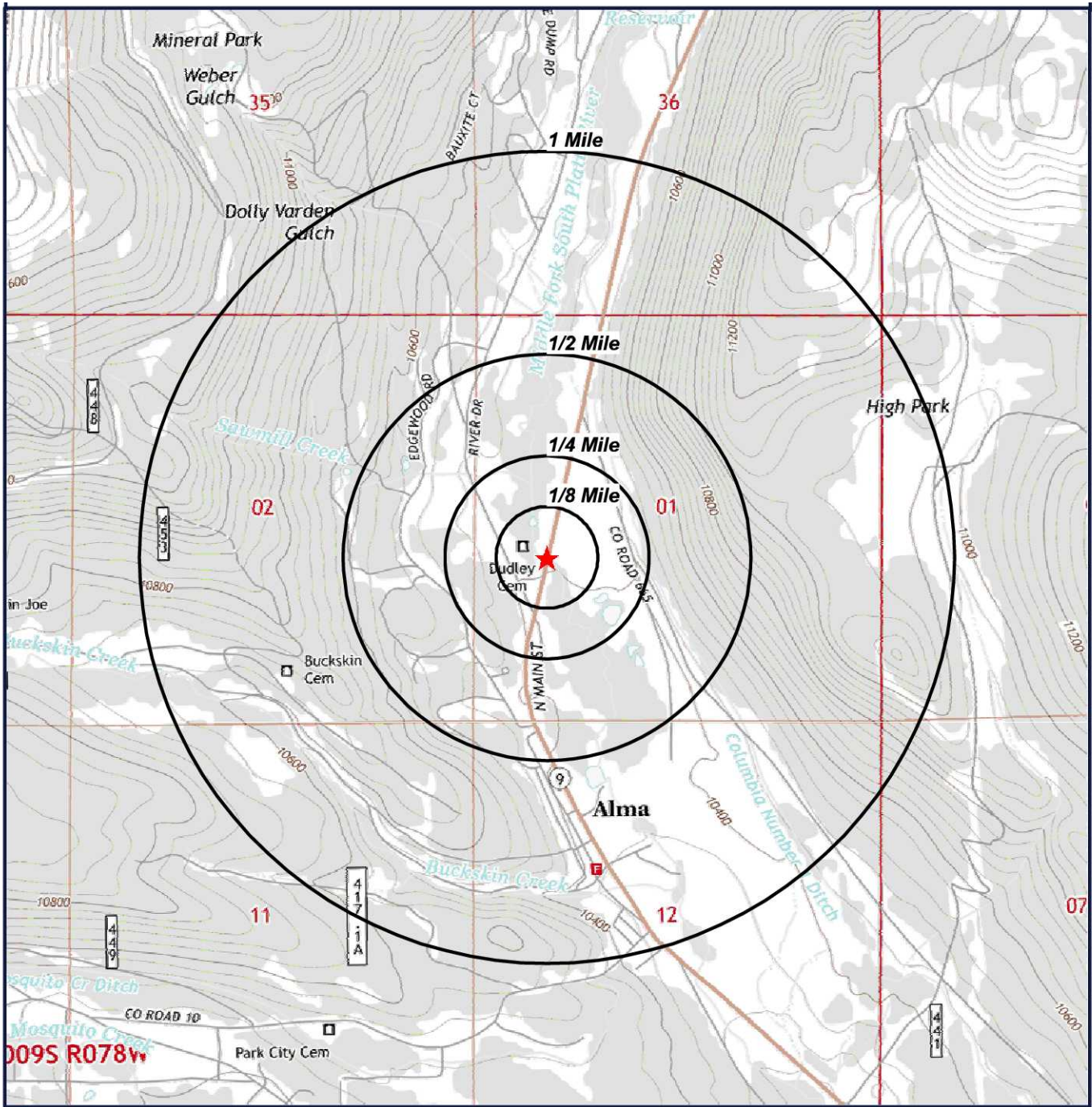
© 2021 Microsoft Corporation © 2021 Maxar © CNES (2021) Distribution Airbus DS © 2021 TomTom

- ★ Target Property (TP)
- ✕ MSHA
- ✕ MRDS

**Quadrangle(s): Alma
SH 9 G-12-C Bridge
Replacement
CO-9
Alma, Colorado
80440**



Topographic Map



★ Target Property (TP)

Quadrangle(s): Alma
Source: USGS,
08/07/2013
SH 9 G-12-C Bridge
Replacement
CO-9
Alma, Colorado
80440



Located Sites Summary

NOTE: Standard environmental records are displayed in **bold**.

Map ID#	Database Name	Site ID#	Relative Elevation	Distance From Site	Site Name	Address	PAGE #
1	MSHA	0504970	Higher (10,394 ft.)	0.128 mi. SSW (676 ft.)	MCCLOSKEY PORTABLE SCREEN PLANT	FROM FAIRPLAY TRAVEL ABOUT 3 MILES NORTH ON HWY 9, THE MINE WILL BE ON YOUR RIG, SILVERTHRONE, CO	17
2	MRDS	10215033	Higher (10,415 ft.)	0.149 mi. ENE (787 ft.)	SILVER STATE MILL	PARK COUNTY, FAIRPLAY, CO 80440	19
3	MSHA	0504569	Higher (10,394 ft.)	0.187 mi. SSW (987 ft.)	SANBORNE SAND AND GRAVEL	HWY 285 WEST TO FAIRPLAY THEN NORTH ON HWY 9. MINE ENTRANCE 1/4 MILE SOUTH OF T, ALMA, CO	20
4	MRDS	10142827	Higher (10,431 ft.)	0.215 mi. NE (1135 ft.)	GRAVEL PIT	PARK COUNTY, FAIRPLAY, CO 80440	23

Site Summary By Database

NOTE: Standard environmental records are displayed in **bold**.

Map ID#	Database Name	Site ID#	Relative Elevation	Distance From Site	Site Name	Address
2	MRDS	10215033	Higher (10,415 ft.)	0.149 mi. ENE (787 ft.)	SILVER STATE MILL	PARK COUNTY, FAIRPLAY, CO 80440
4	MRDS	10142827	Higher (10,431 ft.)	0.215 mi. NE (1135 ft.)	GRAVEL PIT	PARK COUNTY, FAIRPLAY, CO 80440
1	MSHA	0504970	Higher (10,394 ft.)	0.128 mi. SSW (676 ft.)	MCCLOSKEY PORTABLE SCREEN PLANT	FROM FAIRPLAY TRAVEL ABOUT 3 MILES NORTH ON HWY 9, THE MINE WILL BE ON YOUR RIG, SILVERTHRONE, CO
3	MSHA	0504569	Higher (10,394 ft.)	0.187 mi. SSW (987 ft.)	SANBORNE SAND AND GRAVEL	HWY 285 WEST TO FAIRPLAY THEN NORTH ON HWY 9. MINE ENTRANCE 1/4 MILE SOUTH OF T, ALMA, CO

Elevation Summary

Elevations are collected from the USGS 3D Elevation Program 1/3 arc-second (approximately 10 meters) layer hosted at the NGTOC. .

Target Property Elevation: 10385 ft.

NOTE: Standard environmental records are displayed in **bold**.

EQUAL/HIGHER ELEVATION

Map ID#	Database Name	Elevation	Site Name	Address	Page #
1	MSHA	10,394 ft.	MCCLOSKEY PORTABLE SCREEN PLANT	FROM FAIRPLAY TRAVEL ABOUT 3 MILES NORTH ON HWY 9, THE MINE WILL BE ON YOUR RIG, SILVERTHRONE, CO	17
2	MRDS	10,415 ft.	SILVER STATE MILL	PARK COUNTY, FAIRPLAY, CO 80440	19
3	MSHA	10,394 ft.	SANBORNE SAND AND GRAVEL	HWY 285 WEST TO FAIRPLAY THEN NORTH ON HWY 9. MINE ENTRANCE 1/4 MILE SOUTH OF T, ALMA, CO	20
4	MRDS	10,431 ft.	GRAVEL PIT	PARK COUNTY, FAIRPLAY, CO 80440	23

LOWER ELEVATION

No Records Found

Mine Safety and Health Administration Master Index File (MSHA)

MAP ID# 1

Distance from Property: 0.128 mi. (676 ft.) SSW
Elevation: 10,394 ft. (Higher than TP)

FACILITY INFORMATION

MINE ID: 0504970

MINE NAME: MCCLOSKEY PORTABLE SCREEN PLANT

DIRECTIONS TO MINE: FROM FAIRPLAY TRAVEL ABOUT 3 MILES NORTH ON HWY 9, THE MINE WILL BE ON YOUR RIGHT HAND SIDE. YOU WILL SEE A SIGN THAT STATES SNOWSTORM SAND AND GRAVEL THE TURN OFF IS RIGHT AFTER THE SIGN. WE ARE ACROSS FROM COUNTY ROAD 1. IF YOU REACH ALMA YOU WENT TO FAR.

NEAREST TOWN: SILVERTHORNE

STATE: CO

COUNTY: SUMMIT

FACILITY DETAILS

MINE TYPE: SURFACE

MINE STATUS: ABANDONED

STATUS DATE: 02/02/2013

COAL OR METAL/NON-METAL MINE: METAL

CONTROLLER ID: 0041253

CONTROLLER NAME: TOM EVERIST

CONTROLLER BEGIN DATE: 08/09/2010

OPERATOR ID: 0050910

OPERATOR NAME: EVERIST MATERIALS LLC

COMPANY TYPE: OTHER

PRIMARY SIC CODE: 144200

PRIMARY SIC DESCRIPTION: CONSTRUCTION SAND AND GRAVEL

SECONDARY SIC CODE: NOT REPORTED

SECONDARY SIC DESCRIPTION: NOT REPORTED

PRIMARY CANVASS: SANDANDGRAVEL

SECONDARY CANVASS: NOT REPORTED

AVERAGE MINE HEIGHT: NOT REPORTED

MINE GAS CATEGORY: NOT REPORTED

METHANE LIBERATION: NOT REPORTED

NUMBER OF PRODUCING PITS: NOT REPORTED

NUMBER OF NON-PRODUCING PITS: NOT REPORTED

NUMBER OF TAILING PONDS: 0

PILLAR RECOVERY USED: NO

HIGHWALL MINER USED: NO

MULTIPLE PITS: NO

Optional business information that can be used for this address association to allow a different name than the Legal Entity Name

BUSINESS NAME: EVERIST MATERIALS LLC

ADDRESS: 28755 HWY 9

SILVERTHORNE, CO 80498-1150

COUNTRY: USA

PROVINCE: NOT REPORTED

POSTAL CODE: NOT REPORTED

VIOLATION DETAILS

Mine Safety and Health Administration Master Index File (MSHA)

EVENT NUMBER	VIOLATION NUMBER	VIOLATION ISSUE DATE	VIOLATION OCCUR DATE	TYPE OF CITATION	NUMBER OF PEOPLE AFFECTED	PROPOSED PENALTY	DOCKET NUMBER
6554998	6589349	06/22/2011	06/22/2011	CITATION	1	\$100	NOT REPORTED

[Back to Report Summary](#)

Mineral Resource Data System (MRDS)

MAP ID# 2

Distance from Property: 0.149 mi. (787 ft.) ENE
Elevation: 10,415 ft. (Higher than TP)

FACILITY INFORMATION

GEOSEARCH ID: 10215033
DEP ID: 10215033
MINE NAME: SILVER STATE MILL
ADDRESS: PARK COUNTY
FAIRPLAY, CO 80440
DEVELOPMENT STATUS: PAST PRODUCER
MINERAL RESOURCE DATA SYSTEM (MRDS): [CLICK HERE](#)

COMMODITY DETAILS

COMMODITY: GOLD
COMMODITY TYPE: METALLIC
COMMODITY GROUP: GOLD
IMPORTANCE: PRIMARY

COMMODITY: SILVER
COMMODITY TYPE: METALLIC
COMMODITY GROUP: SILVER
IMPORTANCE: PRIMARY

COMMODITY: LEAD
COMMODITY TYPE: METALLIC
COMMODITY GROUP: LEAD
IMPORTANCE: PRIMARY

COMMODITY: ZINC
COMMODITY TYPE: METALLIC
COMMODITY GROUP: ZINC
IMPORTANCE: SECONDARY

COMMODITY: COPPER
COMMODITY TYPE: METALLIC
COMMODITY GROUP: COPPER
IMPORTANCE: SECONDARY

MATERIAL DETAILS NO MATERIAL DETAILS REPORTED

NAME DETAILS

SITE NAME: SILVER STATE MILL
STATUS: CURRENT
SITE NAME: MONTE CRISTO MILL
STATUS: PREVIOUS

[Back to Report Summary](#)

Mine Safety and Health Administration Master Index File (MSHA)

MAP ID# 3

Distance from Property: 0.187 mi. (987 ft.) SSW
Elevation: 10,394 ft. (Higher than TP)

FACILITY INFORMATION

MINE ID: **0504569**
MINE NAME: **SANBORNE SAND AND GRAVEL**
DIRECTIONS TO MINE: **HWY 285 WEST TO FAIRPLAY THEN NORTH ON HWY 9. MINE ENTRANCE 1/4 MILE SOUTH OF THE TOWN OF ALMA.**
NEAREST TOWN: **ALMA**
STATE: **CO**
COUNTY: **PARK**

FACILITY DETAILS

MINE TYPE: **SURFACE**
MINE STATUS: **ABANDONED**
STATUS DATE: **10/01/2011**
COAL OR METAL/NON-METAL MINE: **METAL**
CONTROLLER ID: **0071331**
CONTROLLER NAME: **ZANE SCHMEECKLE; JERRY MILLER**
CONTROLLER BEGIN DATE: **08/01/1995**
OPERATOR ID: **L14440**
OPERATOR NAME: **MILLER FAMILY INVESTMENTS**
COMPANY TYPE: **CORPORATION**
PRIMARY SIC CODE: **104100**
PRIMARY SIC DESCRIPTION: **GOLD ORE**
SECONDARY SIC CODE: **NOT REPORTED**
SECONDARY SIC DESCRIPTION: **NOT REPORTED**
PRIMARY CANVASS: **METAL**
SECONDARY CANVASS: **NOT REPORTED**
AVERAGE MINE HEIGHT: **NOT REPORTED**
MINE GAS CATEGORY: **NOT REPORTED**
METHANE LIBERATION: **NOT REPORTED**
NUMBER OF PRODUCING PITS: **NOT REPORTED**
NUMBER OF NON-PRODUCING PITS: **NOT REPORTED**
NUMBER OF TAILING PONDS: **0**
PILLAR RECOVERY USED: **NO**
HIGHWALL MINER USED: **NO**
MULTIPLE PITS: **NO**

Optional business information that can be used for this address association to allow a different name than the Legal Entity Name

BUSINESS NAME: **ENVIRONMENTAL MINING CORP**
ADDRESS: **10614 HWY 66**
PLATTEVILLE, CO 80651
COUNTRY: **USA**
PROVINCE: **NOT REPORTED**
POSTAL CODE: **NOT REPORTED**

VIOLATION DETAILS

Mine Safety and Health Administration Master Index File (MSHA)

EVENT NUMBER	VIOLATION NUMBER	VIOLATION ISSUE DATE	VIOLATION OCCUR DATE	TYPE OF CITATION	NUMBER OF PEOPLE AFFECTED	PROPOSED PENALTY	DOCKET NUMBER
1094866	6315740	09/20/2006	09/20/2006	CITATION	1	\$60	NOT REPORTED
1095045	4133850	08/21/2007	08/21/2007	CITATION	1	\$108	NOT REPORTED
1086920	6301029	06/01/2005	06/01/2005	CITATION	0	\$60	NOT REPORTED
1095045	4133844	08/21/2007	08/21/2007	CITATION	1	\$112	NOT REPORTED
1095052	6415119	09/11/2007	09/11/2007	ORDER	0	\$	NOT REPORTED
1095052	6415118	09/11/2007	09/11/2007	ORDER	0	\$	NOT REPORTED
1095045	4133842	08/21/2007	08/21/2007	CITATION	1	\$100	NOT REPORTED
1095045	4133845	08/21/2007	08/21/2007	CITATION	1	\$270	NOT REPORTED
1095045	6415121	09/11/2007	08/21/2007	ORDER	0	\$	NOT REPORTED
1095045	4133851	08/21/2007	08/21/2007	CITATION	1	\$112	NOT REPORTED
1086920	6301032	06/01/2005	06/01/2005	CITATION	0	\$60	NOT REPORTED
1086920	6301027	06/01/2005	06/01/2005	CITATION	0	\$60	NOT REPORTED
1086920	6301030	06/01/2005	06/01/2005	CITATION	1	\$60	NOT REPORTED
1095045	4133848	08/21/2007	08/21/2007	CITATION	1	\$108	NOT REPORTED
1086920	6301028	06/01/2005	06/01/2005	CITATION	1	\$135	NOT REPORTED
1095045	4133843	08/21/2007	08/21/2007	CITATION	1	\$112	NOT REPORTED
1094866	6315742	09/20/2006	09/20/2006	CITATION	1	\$60	NOT REPORTED
1094866	6315741	09/20/2006	09/20/2006	CITATION	1	\$60	NOT REPORTED
1087324	6300473	10/19/2004	10/19/2004	CITATION	0	\$60	NOT REPORTED
1086920	6301031	06/01/2005	06/01/2005	CITATION	0	\$60	NOT REPORTED
1087324	6300471	10/15/2004	10/15/2004	ORDER	0	\$	NOT REPORTED
1094866	6315743	09/20/2006	09/20/2006	CITATION	1	\$60	NOT REPORTED
1095045	4133849	08/21/2007	08/21/2007	CITATION	1	\$243	NOT REPORTED
1087324	6300472	10/19/2004	10/19/2004	CITATION	0	\$60	NOT REPORTED
1095045	4133846	08/21/2007	08/21/2007	CITATION	1	\$243	NOT REPORTED
1094221	6301252	03/28/2006	03/28/2006	CITATION	0	\$60	NOT REPORTED
1095052	6415120	09/11/2007	09/11/2007	ORDER	0	\$	NOT REPORTED
1095045	4133847	08/21/2007	08/21/2007	CITATION	1	\$2300	NOT REPORTED
1095045	4133841	08/21/2007	08/21/2007	CITATION	1	\$100	NOT REPORTED
1095849	6445113	06/30/2009	06/30/2009	CITATION	1	\$117	NOT REPORTED
6554903	6589204	07/13/2010	07/13/2010	CITATION	1	\$585	NOT REPORTED
6554903	6589205	07/13/2010	07/13/2010	CITATION	1	\$117	NOT REPORTED
6554903	6589206	07/13/2010	07/13/2010	CITATION	1	\$117	NOT REPORTED
1095349	6445813	06/03/2008	06/03/2008	CITATION	1	\$108	NOT REPORTED
1095849	6445111	06/30/2009	06/30/2009	CITATION	1	\$100	NOT REPORTED
1095849	6445110	06/30/2009	06/30/2009	CITATION	1	\$100	NOT REPORTED
1095849	6445114	06/30/2009	06/30/2009	CITATION	1	\$100	NOT REPORTED
1095849	6445104	06/30/2009	06/30/2009	CITATION	1	\$100	NOT REPORTED
1095849	6445106	06/30/2009	06/30/2009	CITATION	1	\$100	NOT REPORTED
6554941	6589274	11/22/2010	11/22/2010	CITATION	1	\$1944	NOT REPORTED
6554903	6589207	07/13/2010	07/13/2010	CITATION	1	\$117	NOT REPORTED
6554941	6589273	11/22/2010	11/22/2010	CITATION	1	\$117	NOT REPORTED
1095349	6445812	06/03/2008	06/03/2008	CITATION	1	\$100	NOT REPORTED

Mine Safety and Health Administration Master Index File (MSHA)

1095849	6445112	06/30/2009	06/30/2009	CITATION	1	\$100	NOT REPORTED
6554903	6589208	07/13/2010	07/13/2010	CITATION	1	\$392	NOT REPORTED
6554941	6589275	11/22/2010	11/22/2010	CITATION	1	\$117	NOT REPORTED
6554903	6589209	07/13/2010	07/13/2010	CITATION	1	\$1944	NOT REPORTED
1095849	6445105	06/30/2009	06/30/2009	CITATION	1	\$100	NOT REPORTED
1095849	6445108	06/30/2009	06/30/2009	CITATION	1	\$263	NOT REPORTED
1095849	6445107	06/30/2009	06/30/2009	CITATION	1	\$100	NOT REPORTED
1095349	6445811	06/03/2008	06/03/2008	CITATION	1	\$162	NOT REPORTED
1095849	6445109	06/30/2009	06/30/2009	CITATION	1	\$100	NOT REPORTED

[Back to Report Summary](#)

Mineral Resource Data System (MRDS)

MAP ID# 4

Distance from Property: 0.215 mi. (1,135 ft.) NE
Elevation: 10,431 ft. (Higher than TP)

FACILITY INFORMATION

GEOSEARCH ID: 10142827

DEP ID: 10142827

MINE NAME: GRAVEL PIT

ADDRESS: PARK COUNTY

FAIRPLAY, CO 80440

DEVELOPMENT STATUS: PAST PRODUCER

MINERAL RESOURCE DATA SYSTEM (MRDS): [CLICK HERE](#)

COMMODITY DETAILS

COMMODITY: STONE, CRUSHED/BROKEN

COMMODITY TYPE: NON-METALLIC

COMMODITY GROUP: STONE, CRUSHED

IMPORTANCE: PRIMARY

MATERIAL DETAILS NO MATERIAL DETAILS REPORTED

NAME DETAILS

SITE NAME: GRAVEL PIT

STATUS: CURRENT

[Back to Report Summary](#)

Unlocated Sites Summary

This list contains sites that could not be mapped due to limited or incomplete address information.

No Records Found

Environmental Records Definitions - FEDERAL

AIRSAFS Aerometric Information Retrieval System / Air Facility Subsystem

VERSION DATE: 10/20/14

The United States Environmental Protection Agency (EPA) modified the Aerometric Information Retrieval System (AIRS) to a database that exclusively tracks the compliance of stationary sources of air pollution with EPA regulations: the Air Facility Subsystem (AFS). Since this change in 2001, the management of the AIRS/AFS database was assigned to EPA's Office of Enforcement and Compliance Assurance. Enforcement and Compliance History Online (ECHO) Clean Air Act data from AFS are frozen and reflect data as of October 17, 2014, the EPA retired this system for Clean Air Act stationary sources.

ALTFUELS Alternative Fueling Stations

VERSION DATE: 10/28/20

Nationwide list of alternative fueling stations made available by the U.S. Department of Energy's Office of Energy Efficiency & Renewable Energy. Includes Bio-diesel stations, Ethanol (E85) stations, Liquefied Petroleum Gas (Propane) stations, Ethanol (E85) stations, Natural Gas stations, Hydrogen stations, and Electric Vehicle Supply Equipment (EVSE).

BF Brownfields Management System

VERSION DATE: 01/11/21

Brownfields are real property, the expansion, redevelopment, or reuse of which may be complicated by the presence or potential presence of a hazardous substance, pollutant, or contaminant. Cleaning up and reinvesting in these properties takes development pressures off of undeveloped, open land, and both improves and protects the environment. The United States Environmental Protection Agency maintains this database to track activities in the various brown field grant programs including grantee assessment, site cleanup and site redevelopment. This database included tribal brownfield sites.

BRS Biennial Reporting System

VERSION DATE: 12/31/17

The United States Environmental Protection Agency (EPA), in cooperation with the States, biennially collects information regarding the generation, management, and final disposition of hazardous wastes regulated under the Resource Conservation and Recovery Act of 1976 (RCRA), as amended. The Biennial Report captures detailed data on the generation of hazardous waste from large quantity generators and data on waste management practices from treatment, storage and disposal facilities. Currently, the EPA states that data collected between 1991 and 1997 was originally a part of the defunct Biennial Reporting System and is now incorporated into the RCRAInfo data system.

CDL Clandestine Drug Laboratory Locations

VERSION DATE: 06/17/20

Environmental Records Definitions - FEDERAL

The U.S. Department of Justice ("the Department") provides this information as a public service. It contains addresses of some locations where law enforcement agencies reported they found chemicals or other items that indicated the presence of either clandestine drug laboratories or dumpsites. In most cases, the source of the entries is not the Department, and the Department has not verified the entry and does not guarantee its accuracy. Members of the public must verify the accuracy of all entries by, for example, contacting local law enforcement and local health departments. The Department does not establish, implement, enforce, or certify compliance with clean-up or remediation standards for contaminated sites; the public should contact a state or local health department or environmental protection agency for that information.

DNPL Delisted National Priorities List

VERSION DATE: 02/22/21

This database includes sites from the United States Environmental Protection Agency's Final National Priorities List (NPL) where remedies have proven to be satisfactory or sites where the original analyses were inaccurate, and the site is no longer appropriate for inclusion on the NPL, and final publication in the Federal Register has occurred.

DOCKETS EPA Docket Data

VERSION DATE: 12/22/05

The United States Environmental Protection Agency Docket data lists Civil Case Defendants, filing dates as far back as 1971, laws broken including section, violations that occurred, pollutants involved, penalties assessed and superfund awards by facility and location. Please refer to ICIS database as source of current data.

DOD Department of Defense Sites

VERSION DATE: 12/01/14

This information originates from the National Atlas of the United States Federal Lands data, which includes lands owned or administered by the Federal government. Army DOD, Army Corps of Engineers DOD, Air Force DOD, Navy DOD and Marine DOD areas of 640 acres or more are included.

EC Federal Engineering Institutional Control Sites

VERSION DATE: 02/23/21

This database includes site locations where Engineering and/or Institutional Controls have been identified as part of a selected remedy for the site as defined by United States Environmental Protection Agency official remedy decision documents. The data displays remedy component information for Superfund decision documents issued in fiscal years 1982-2017, and it includes final and deleted NPL sites as well as sites with a Superfund Alternative Approach (SAA) agreement in place. The only sites included that are not on the NPL, proposed for NPL, or removed from proposed NPL, are those with an SAA Agreement in place. A site listing does not indicate that the institutional and engineering controls are currently in place nor will be in place once the remedy is complete; it only indicates that the decision to include either of them in the remedy is documented as of the completed date of the document. Institutional controls are actions, such as legal controls, that help minimize the

Environmental Records Definitions - FEDERAL

potential for human exposure to contamination by ensuring appropriate land or resource use. Engineering controls include caps, barriers, or other device engineering to prevent access, exposure, or continued migration of contamination.

ECHOR08 Enforcement and Compliance History Information

VERSION DATE: 11/28/20

The U.S. Environmental Protection Agency's Enforcement and Compliance History Online (ECHO) database, provides compliance and enforcement information for facilities nationwide. This database includes facilities regulated as Clean Air Act stationary sources, Clean Water Act direct dischargers, Resource Conservation and Recovery Act hazardous waste handlers, Safe Drinking Water Act public water systems along with other data, such as Toxics Release Inventory releases.

ERNSCO Emergency Response Notification System

VERSION DATE: 12/27/20

This National Response Center database contains data on reported releases of oil, chemical, radiological, biological, and/or etiological discharges into the environment anywhere in the United States and its territories. The data comes from spill reports made to the U.S. Environmental Protection Agency, U.S. Coast Guard, the National Response Center and/or the U.S. Department of Transportation.

FEMAUST FEMA Owned Storage Tanks

VERSION DATE: 12/01/16

This is a listing of FEMA owned underground and aboveground storage tank sites. For security reasons, address information is not released to the public according to the U.S. Department of Homeland Security.

FRSCO Facility Registry System

VERSION DATE: 10/02/20

The United States Environmental Protection Agency's Office of Environmental Information (OEI) developed the Facility Registry System (FRS) as the centrally managed database that identifies facilities, sites or places subject to environmental regulations or of environmental interest. The Facility Registry System replaced the Facility Index System or FINDS database.

FUDS Formerly Used Defense Sites

VERSION DATE: 12/31/18

The Formerly Used Defense Sites (FUDS) inventory includes properties previously owned by or leased to the United States and under Secretary of Defense Jurisdiction, as well as Munitions Response Areas (MRAs). The remediation of these properties is the responsibility of the Department of Defense. This data is provided by the U.S. Army Corps of Engineers (USACE), the boundaries/polygon data are based on preliminary findings and not

Environmental Records Definitions - FEDERAL

all properties currently have polygon data available. **DISCLAIMER:** This data represents the results of data collection/processing for a specific USACE activity and is in no way to be considered comprehensive or to be used in any legal or official capacity as presented on this site. While the USACE has made a reasonable effort to insure the accuracy of the maps and associated data, it should be explicitly noted that USACE makes no warranty, representation or guaranty, either expressed or implied, as to the content, sequence, accuracy, timeliness or completeness of any of the data provided herein. For additional information on Formerly Used Defense Sites please contact the USACE Public Affairs Office at (202) 528-4285.

FUSRAP Formerly Utilized Sites Remedial Action Program

VERSION DATE: 03/04/17

The U.S. Department of Energy (DOE) established the Formerly Utilized Sites Remedial Action Program (FUSRAP) in 1974 to remediate sites where radioactive contamination remained from the Manhattan Project and early U.S. Atomic Energy Commission (AEC) operations. The DOE Office of Legacy Management (LM) established long-term surveillance and maintenance (LTS&M) requirements for remediated FUSRAP sites. DOE evaluates the final site conditions of a remediated site on the basis of risk for different future uses. DOE then confirms that LTS&M requirements will maintain protectiveness.

HISTPST Historical Gas Stations

VERSION DATE: NR

This historic directory of service stations is provided by the Cities Service Company. The directory includes Cities Service filling stations that were located throughout the United States in 1930.

HMIRSR08 Hazardous Materials Incident Reporting System

VERSION DATE: 10/27/20

The HMIRS database contains unintentional hazardous materials release information reported to the U.S. Department of Transportation located in EPA Region 8. This region includes the following states: Colorado, Montana, North Dakota, South Dakota, Utah, and Wyoming.

HWCD Hazardous Waste Compliance Docket Facilities

VERSION DATE: 10/29/20

This list of the Federal Agency Hazardous Waste Compliance Docket Facilities is maintained by the United States Environmental Protection Agency (EPA). According to the EPA, Section 120(c) of CERCLA requires EPA to establish a listing, known as the Federal Facility Hazardous Waste Compliance Docket (Docket), of Federal facilities which are managing or have managed hazardous waste; or have had a release of hazardous waste. Thus, the Docket identifies all Federal facilities that must be evaluated to determine whether they pose a risk to human health and the environment and it makes this information available to the public. In order for the Docket to remain current and accurate it requires periodic updating.

Environmental Records Definitions - FEDERAL

ICIS Integrated Compliance Information System (formerly DOCKETS)

VERSION DATE: 09/19/20

ICIS is a case activity tracking and management system for civil, judicial, and administrative federal Environmental Protection Agency enforcement cases. ICIS contains information on federal administrative and federal judicial cases under the following environmental statutes: the Clean Air Act, the Clean Water Act, the Resource Conservation and Recovery Act, the Emergency Planning and Community Right-to-Know Act - Section 313, the Toxic Substances Control Act, the Federal Insecticide, Fungicide, and Rodenticide Act, the Comprehensive Environmental Response, Compensation, and Liability Act, the Safe Drinking Water Act, and the Marine Protection, Research, and Sanctuaries Act.

ICISCLEANERS Integrated Compliance Information System Drycleaners

VERSION DATE: 09/19/20

This is a listing of drycleaner facilities from the Integrated Compliance Information System (ICIS). The U.S. Environmental Protection Agency (EPA) tracks facilities that possess NAIC and SIC codes that classify businesses as drycleaner establishments. The following Primary SIC Codes are included in this data: 7211, 7212, 7213, 7215, 7216, 7217, 7218, and/or 7219; the following Primary NAICS Codes are included in this data: 812320, 812331, and/or 812332.

ICISNPDES Integrated Compliance Information System National Pollutant Discharge Elimination System

VERSION DATE: 04/26/20

Authorized by the Clean Water Act, the National Pollutant Discharge Elimination System (NPDES) permit program controls water pollution by regulating point sources that discharge pollutants into waters of the United States. This database is provided by the U.S. Environmental Protection Agency.

LUCIS Land Use Control Information System

VERSION DATE: 09/01/06

The LUCIS database is maintained by the U.S. Department of the Navy and contains information for former Base Realignment and Closure (BRAC) properties across the United States.

MLTS Material Licensing Tracking System

VERSION DATE: 06/29/17

MLTS is a list of approximately 8,100 sites which have or use radioactive materials subject to the United States Nuclear Regulatory Commission (NRC) licensing requirements. Disclaimer: Due to agency regulations and policies, this database contains applicant/licensee location information which may or may not be related to the physical location per MLTS site.

Environmental Records Definitions - FEDERAL

MRDS Mineral Resource Data System

VERSION DATE: 03/15/16

MRDS (Mineral Resource Data System) is a collection of reports describing metallic and nonmetallic mineral resources throughout the world. Included are deposit name, location, commodity, deposit description, geologic characteristics, production, reserves, resources, and references. This database contains the records previously provided in the Mineral Resource Data System (MRDS) of USGS and the Mineral Availability System/Mineral Industry Locator System (MAS/MILS) originated in the U.S. Bureau of Mines, which is now part of USGS. The USGS has ceased systematic updates of the MRDS database with their focus more recently on deposits of critical minerals while providing a well-documented baseline of historical mine locations from USGS topographic maps. A few updates last occurred 2015 and early 2016 for select mine site area/s.

MSHA Mine Safety and Health Administration Master Index File

VERSION DATE: 08/07/20

The Mine dataset lists all Coal and Metal/Non-Metal mines under MSHA's jurisdiction since 1/1/1970. It includes such information as the current status of each mine (Active, Abandoned, NonProducing, etc.), the current owner and operating company, commodity codes and physical attributes of the mine. Mine ID is the unique key for this data. This information is provided by the United States Department of Labor - Mine Safety and Health Administration (MSHA).

NLRRCRAC No Longer Regulated RCRA Corrective Action Facilities

VERSION DATE: 12/14/20

This database includes RCRA Corrective Action facilities that are no longer regulated by the United States Environmental Protection Agency or do not meet other RCRA reporting requirements.

NLRRCRAT No Longer Regulated RCRA Non-CORRACTS TSD Facilities

VERSION DATE: 12/14/20

This database includes RCRA Non-Corrective Action TSD facilities that are no longer regulated by the United States Environmental Protection Agency or do not meet other RCRA reporting requirements. This listing includes facilities that formerly treated, stored or disposed of hazardous waste.

NMS Former Military Nike Missile Sites

VERSION DATE: 12/01/84

This information was taken from report DRXTH-AS-IA-83A016 (Historical Overview of the Nike Missile System, 12/1984) which was performed by Environmental Science and Engineering, Inc. for the U.S. Army Toxic and Hazardous Materials Agency Assessment Division. The Nike system was deployed between 1954 and the mid-1970's. Among the substances used or stored on Nike sites were liquid missile fuel (JP-4); starter fluids (UDKH, aniline, and furfuryl alcohol); oxidizer (IRFNA); hydrocarbons (motor oil, hydraulic fluid, diesel fuel, gasoline,

Environmental Records Definitions - FEDERAL

heating oil); solvents (carbon tetrachloride, trichloroethylene, trichloroethane, stoddard solvent); and battery electrolyte. The quantities of material a disposed of and procedures for disposal are not documented in published reports. Virtually all information concerning the potential for contamination at Nike sites is confined to personnel who were assigned to Nike sites. During deactivation most hardware was shipped to depot-level supply points. There were reportedly instances where excess materials were disposed of on or near the site itself at closure. There was reportedly no routine site decontamination.

NPDES08 National Pollutant Discharge Elimination System

VERSION DATE: 04/01/07

Authorized by the Clean Water Act, the National Pollutant Discharge Elimination System (NPDES) permit program controls water pollution by regulating point sources that discharge pollutants into waters of the United States. The NPDES database was collected from the U.S. Environmental Protection Agency (EPA) from December 2002 through April 2007. Refer to the ICIS and/or ICIS-NPDES database as source of current data. This database includes permitted facilities located in EPA Region 8. This region includes the following states: Colorado, Montana, North Dakota, South Dakota, Utah, and Wyoming.

NPL National Priorities List

VERSION DATE: 02/22/21

This database includes United States Environmental Protection Agency (EPA) National Priorities List sites that fall under the EPA's Superfund program, established to fund the cleanup of the most serious uncontrolled or abandoned hazardous waste sites identified for possible long-term remedial action.

ODI Open Dump Inventory

VERSION DATE: 06/01/85

The open dump inventory was published by the United States Environmental Protection Agency. An "open dump" is defined as a facility or site where solid waste is disposed of which is not a sanitary landfill which meets the criteria promulgated under section 4004 of the Solid Waste Disposal Act (42 U.S.C. 6944) and which is not a facility for disposal of hazardous waste. This inventory has not been updated since June 1985.

PADS PCB Activity Database System

VERSION DATE: 11/19/20

PADS Identifies generators, transporters, commercial storers and/or brokers and disposers of Polychlorinated Biphenyls (PCB) who are required to notify the U.S. Environmental Protection Agency of such activities.

PCSR08 Permit Compliance System

VERSION DATE: 08/01/12

The historic Permit Compliance System tracked enforcement status and permit compliance of facilities controlled

Environmental Records Definitions - FEDERAL

by the National Pollutant Discharge Elimination System (NPDES) under the Clean Water Act. This database includes permitted facilities located in EPA Region 8 states: Colorado, Montana, North Dakota, South Dakota, Utah, and Wyoming. This system has since been modernized by United States Environmental Protection Agency and is now integrated into the Integrated Compliance Information System (ICIS). Please refer to the ICIS database as the current source for this data.

PNPL Proposed National Priorities List

VERSION DATE: 02/22/21

This database contains sites proposed to be included on the National Priorities List (NPL) in the Federal Register. The United States Environmental Protection Agency investigates these sites to determine if they may present long-term threats to public health or the environment.

RCRAC Resource Conservation & Recovery Act - Corrective Action Facilities

VERSION DATE: 12/14/20

The Resource Conservation and Recovery Act (RCRA) gives the U.S. Environmental Protection Agency (EPA) the authority to control hazardous waste from the "cradle-to-grave." This includes the generation, transportation, treatment, storage, and disposal of hazardous waste. RCRA also set forth a framework for the management of non-hazardous solid wastes. The 1986 amendments to RCRA enabled EPA to address environmental problems that could result from underground tanks storing petroleum and other hazardous substances. This listing refers to facilities with corrective action activity.

RCRAGR08 Resource Conservation & Recovery Act - Generator

VERSION DATE: 12/14/20

The Resource Conservation and Recovery Act (RCRA) gives the U.S. Environmental Protection Agency (EPA) the authority to control hazardous waste from the "cradle-to-grave." This includes the generation, transportation, treatment, storage, and disposal of hazardous waste. RCRA also set forth a framework for the management of non-hazardous solid wastes. The 1986 amendments to RCRA enabled EPA to address environmental problems that could result from underground tanks storing petroleum and other hazardous substances. This listing refers to facilities currently generating hazardous waste. EPA Region 8 includes the following states: Colorado, Montana, North Dakota, South Dakota, Utah, and Wyoming.

RCRANGR08 Resource Conservation & Recovery Act - Non-Generator

VERSION DATE: 12/14/20

The Resource Conservation and Recovery Act (RCRA) gives the U.S. Environmental Protection Agency (EPA) the authority to control hazardous waste from the "cradle-to-grave." This includes the generation, transportation, treatment, storage, and disposal of hazardous waste. RCRA also set forth a framework for the management of non-hazardous solid wastes. The 1986 amendments to RCRA enabled EPA to address environmental problems that could result from underground tanks storing petroleum and other hazardous substances. This listing refers to facilities classified as non-generators. Non-Generators do not presently generate hazardous waste. EPA

Environmental Records Definitions - FEDERAL

Region 8 includes the following states: Colorado, Montana, North Dakota, South Dakota, Utah, and Wyoming.

RCRASC RCRA Sites with Controls

VERSION DATE: 02/02/21

The Resource Conservation and Recovery Act (RCRA) gives the U.S. Environmental Protection Agency (EPA) the authority to control hazardous waste from the "cradle-to-grave." This includes the generation, transportation, treatment, storage, and disposal of hazardous waste. RCRA also set forth a framework for the management of non-hazardous solid wastes. The 1986 amendments to RCRA enabled EPA to address environmental problems that could result from underground tanks storing petroleum and other hazardous substances. This listing refers to facilities with institutional controls in place.

RCRASUBC Resource Conservation & Recovery Act - Subject to Corrective Action Facilities

VERSION DATE: 12/14/20

The Resource Conservation and Recovery Act (RCRA) gives the U.S. Environmental Protection Agency (EPA) the authority to control hazardous waste from the "cradle-to-grave." This includes the generation, transportation, treatment, storage, and disposal of hazardous waste. RCRA also set forth a framework for the management of non-hazardous solid wastes. The 1986 amendments to RCRA enabled EPA to address environmental problems that could result from underground tanks storing petroleum and other hazardous substances. This listing refers to facilities subject to corrective actions.

RCRAT Resource Conservation & Recovery Act - Non-CORRACTS Treatment, Storage & Disposal Facilities

VERSION DATE: 12/14/20

The Resource Conservation and Recovery Act (RCRA) gives the U.S. Environmental Protection Agency (EPA) the authority to control hazardous waste from the "cradle-to-grave." This includes the generation, transportation, treatment, storage, and disposal of hazardous waste. RCRA also set forth a framework for the management of non-hazardous solid wastes. The 1986 amendments to RCRA enabled EPA to address environmental problems that could result from underground tanks storing petroleum and other hazardous substances. This listing refers to facilities recognized as hazardous waste treatment, storage, and disposal sites (TSD).

RODS Record of Decision System

VERSION DATE: 09/21/20

These decision documents maintained by the United States Environmental Protection Agency describe the chosen remedy for NPL (Superfund) site remediation. They also include site history, site description, site characteristics, community participation, enforcement activities, past and present activities, contaminated media, the contaminants present, and scope and role of response action.

SEMS Superfund Enterprise Management System

VERSION DATE: 02/22/21

Environmental Records Definitions - FEDERAL

The U.S. Environmental Protection Agency's (EPA) Office of Solid Waste and Emergency Response, Office of Superfund Remediation and Technology Innovation (OSRTI), has implemented The Superfund Enterprise Management System (SEMS), formerly known as CERCLIS (Comprehensive Environmental Response, Compensation and Liability Information System) to track and report on clean-up and enforcement activities taking place at Superfund sites. SEMS represents a joint development and ongoing collaboration between Superfund's Remedial, Removal, Federal Facilities, Enforcement and Emergency Response programs.

SEMSARCH Superfund Enterprise Management System Archived Site Inventory

VERSION DATE: 02/22/21

The U.S. Environmental Protection Agency's (EPA) Superfund Enterprise Management System Archived Site Inventory (List 8R Archived) replaced the CERCLIS NFRAP reporting system in 2015. This listing reflects sites at which the EPA has determined that assessment has been completed and no further remedial action is planned under the Superfund program.

SEMSLIENS SEMS Lien on Property

VERSION DATE: 06/22/20

The U.S. Environmental Protection Agency's (EPA) Office of Solid Waste and Emergency Response, Office of Superfund Remediation and Technology Innovation (OSRTI), has implemented The Superfund Enterprise Management System (SEMS), formerly known as CERCLIS (Comprehensive Environmental Response, Compensation and Liability Information System) to track and report on clean-up and enforcement activities taking place at Superfund sites. SEMS represents a joint development and ongoing collaboration between Superfund's Remedial, Removal, Federal Facilities, Enforcement and Emergency Response programs. This is a listing of SEMS sites with a lien on the property.

SFLIENS CERCLIS Liens

VERSION DATE: 06/08/12

A Federal CERCLA ("Superfund") lien can exist by operation of law at any site or property at which United States Environmental Protection Agency has spent Superfund monies. These monies are spent to investigate and address releases and threatened releases of contamination. CERCLIS provides information as to the identity of these sites and properties. This database contains those CERCLIS sites where the Lien on Property action is complete. Please refer to the SEMSLIENS database as source of current data.

SMCRA Surface Mining Control and Reclamation Act Sites

VERSION DATE: 12/18/20

An inventory of land and water impacted by past mining (primarily coal mining) is maintained by the Office of Surface Mining Reclamation and Enforcement (OSMRE) to provide information needed to implement the Surface Mining Control and Reclamation Act of 1977 (SMCRA). The inventory contains information on the location, type, and extent of AML impacts, as well as, information on the cost associated with the reclamation of those

Environmental Records Definitions - FEDERAL

problems. The inventory is based upon field surveys by State, Tribal, and OSMRE program officials. It is dynamic to the extent that it is modified as new problems are identified and existing problems are reclaimed.

SSEHRIPFAS

SSEHRI PFAS Contamination Sites

VERSION DATE: 12/12/19

This PFAS Contamination Site Tracker database is compiled by the Social Science Environmental Health Research Institute (SSEHRI) at Northeastern University. According to the SSEHRI, the database records qualitative and quantitative data from each known site of PFAS contamination, including timeline of discovery, sources, levels, health impacts, community response, and government response. The goal of this database is to compile information and support public understanding of the rapidly unfolding issue of PFAS contamination. All data presented was extracted from government websites, news articles, or publicly available documents, and this is cited in the tracker. Disclaimer: The source conveys this database undergoes regular updates as new information becomes available, some sites may be missing and/or contain information that is incorrect or outdated, as well as their information represents all contamination sites SSEHRI is aware of, not all possible contamination sites. This data is not intended to be used for legal purposes. Limited location details are available with this data. Please access the following source link for the most current information:
<https://pfasproject.com/pfas-contamination-site-tracker/>

SSTS

Section Seven Tracking System

VERSION DATE: 08/04/20

The United States Environmental Protection Agency tracks information on pesticide establishments through the Section Seven Tracking System (SSTS). SSTS records the registration of new establishments and records pesticide production at each establishment. The Federal Insecticide, Fungicide and Rodenticide Act (FIFRA) requires that production of pesticides or devices be conducted in a registered pesticide-producing or device-producing establishment. "Production" includes formulation, packaging, repackaging, and relabeling. For this database, the Product Information is only available for establishments up through 2014 or prior years, product details are no longer released by the EPA within the current SSTS non-Confidential Business Information data.

TRI

Toxics Release Inventory

VERSION DATE: 12/31/18

The Toxics Release Inventory, provided by the United States Environmental Protection Agency, includes data on toxic chemical releases and waste management activities from certain industries as well as federal and tribal facilities. This inventory contains information about the types and amounts of toxic chemicals that are released each year to the air, water, and land as well as information on the quantities of toxic chemicals sent to other facilities for further waste management.

TSCA

Toxic Substance Control Act Inventory

VERSION DATE: 12/31/16

The Toxic Substances Control Act (TSCA) was enacted in 1976 to ensure that chemicals manufactured,

Environmental Records Definitions - FEDERAL

imported, processed, or distributed in commerce, or used or disposed of in the United States do not pose any unreasonable risks to human health or the environment. TSCA section 8(b) provides the United States Environmental Protection Agency (EPA) authority to "compile, keep current, and publish a list of each chemical substance that is manufactured or processed in the United States." This TSCA Chemical Substance Inventory contains non-confidential information on the production amount of toxic chemicals from each manufacturer and importer site. The EPA has collected Chemical Data Reporting (CDR) data since in 1986 (as Inventory Update Reporting). Collections occur approximately every four years and reporting requirements changed from collection to collection.

USUMTRCA

Uranium Mill Tailings Radiation Control Act Sites

VERSION DATE: 03/04/17

The Legacy Management Office of the Department of Energy (DOE) manages radioactive and chemical waste, environmental contamination, and hazardous material at over 100 sites across the U.S. The L.M. Office manages this database of sites registered under the Uranium Mill Tailings Control Act (UMTRCA).

Environmental Records Definitions - STATE (CO)

APCDP Air Pollution Control Division Permitted Facilities

VERSION DATE: 06/29/20

This list of Air Pollution Control Division Permitted Facilities is maintained by the Colorado Department of Public Health and Environment. The Stationary Sources Program evaluates and develops air permits for stationary sources in Colorado. The program inspects sources to determine compliance with air regulations and permit conditions and maintains a computerized inventory of air pollution emissions throughout the state.

ASBESTOS Asbestos Abatement and Demolition Projects

VERSION DATE: 12/28/17

The Colorado Department of Public Health and Environment's Air Pollution Control Division assists schools and businesses to comply with air pollution laws regulating asbestos and asbestos containing materials. The regulation that governs asbestos in Colorado is the Colorado Air Quality Control Commission's Regulation No. 8, Part B, "Emission Standards for Asbestos." Notification is required for all demolitions of all facilities and all asbestos abatement projects that exceed the trigger levels, whatever is the lesser quantity. The notification requirements apply to both friable and non-friable asbestos materials. This database contains those related projects since January 2008.

AST Aboveground Storage Tank Facilities

VERSION DATE: 01/04/21

This list of aboveground storage tank (AST) facilities is maintained by the Colorado Department of Public Health and Environment. Types of tanks included are: currently in use, never installed/existed, never installed-permit revoked, not regulated, other, pending installation, permanently closed, temporarily out of use.

BF Colorado Brownfield Sites

VERSION DATE: 11/12/20

This list of Colorado brownfields is maintained by the Colorado Department of Public Health & Environment (CDPHE) Hazardous Materials and Waste Management Division Brownfields Program in conjunction with the Voluntary Cleanup Program (VCUP). The brownfields database is an inventory of sites for which CPDHE has provided brownfields assistance in the form of targeted brownfields assessments, a revolving loan or grant through the Colorado Brownfields Revolving Loan Fund, and/or assistance through our state brownfields grants program. Most of these incentives are available only to local governments or nonprofits. In some cases, sites that receive state incentives also go through the VCUP program but most of the VCUP applicants are private entities not eligible for other state brownfields incentives.

CDPS Colorado Discharge Permit System Facilities

VERSION DATE: 02/03/19

The Colorado Department of Public Health & Environment's Water Quality Control Division regulates the

Environmental Records Definitions - STATE (CO)

Colorado Discharge Permit System. This system controls stormwater discharges from construction activities by requiring a Stormwater Construction Permit to reduce pollutants from entering streams, river, lakes and wetlands as a result of runoff from residential, commercial and industrial areas. This database also includes facilities with Industrial Stormwater Permits.

CLEANERS Dry Cleaning Facilities

VERSION DATE: 01/06/21

This list of dry cleaners, which have obtained an air permit through the Air Pollution Control Division, is maintained by the Colorado Department of Public Health and Environment.

COVENANTS Environmental Real Covenants List

VERSION DATE: 11/23/20

This list of environmental covenants is maintained by the Colorado Division of Public Health and Environment. Senate Bill 01-145 gave authority to the Colorado Department of Public Health and Environment to approve requests to restrict the future use of a property using an enforceable agreement called an environmental covenant. These covenants, which are recorded with the deed and run with the land, provide a mechanism to ensure that institutional controls that are part of environmental remediation projects are properly implemented and that engineered structures are protected and maintained, so that implemented remedies continue to be protective of human health and the environment for as long as any residual contamination remains a risk.

HISTSWLF Historical Solid Waste Landfills

VERSION DATE: NR

This historical solid waste landfills database contains data from the Hazardous Materials Waste Management Division (HMWMD) of the Colorado Department of Public Health and other various state and local agencies. In the early 1980s, the HMWMD conducted a survey of staff members and local agencies to compile this listing of sites that were known or thought to have waste issues. This Solid Waste Historical Data is not considered complete or verifiable and has not been maintained since the late 1980s. The HMWMD is not responsible and shall not be liable to the used for damages of any kind arising out of the use of this data or information.

HWSCA Hazardous Waste Sites- Corrective Action

VERSION DATE: 06/30/03

The Resource Conservation and Recovery Act (RCRA) was enacted by Congress in 1976, followed by the promulgation of implementing regulations in 1980. In 1984, the Hazardous and Solid Waste Amendments (HSWA) were added to RCRA providing for corrective action at facilities subject to RCRA. That same year, the State was authorized by EPA to implement the RCRA program in Colorado on their behalf. Corrective action may be implemented as part of a RCRA Hazardous Waste Permit, an Order, or a Corrective Action Plan pursuant to the Colorado Hazardous Waste Regulations. Corrective action is the process by which regulated facilities investigate and remediate, as necessary, all contamination (soil, ground water, surface water, air) associated with their releases into the environment. Historic Corrective Action Sites are facilities that have

Environmental Records Definitions - STATE (CO)

completed the RCRA Subtitle C corrective Action process. This data was provided by the Colorado Department of Public Health and Environment in 2008, please contact the agency directly to verify current site details.

HWSG Hazardous Waste Sites- Generator

VERSION DATE: 06/30/03

The Resource Conservation and Recovery Act (RCRA) was enacted by congress in 1976, followed by the promulgation of implementing regulations in 1980. In 1984, the State was authorized by EPA to implement the RCRA program in Colorado on their behalf. This facility listing includes RCRA sites listed as generators of hazardous waste (Small Quantity Generators and Large Quantity Generators) and was provided by the Colorado Department of Public Health and Environment in 2008, please contact the agency directly to verify current site details.

Small Quantity Generators (SQG) generate, in any calendar month, more than 100 kg (220 lbs.) but less than 1,000 kg (2,200 lbs.) of RCRA hazardous waste; and generate, in any calendar month, or accumulate at any time, no more than 1 kg (2.2 lbs.) of acute hazardous waste and no more than 100 kg (220 lbs.) of material from the cleanup of a spill of acute hazardous waste; and accumulate on-site no more than 6000 kg (13,200 lbs.) of hazardous waste at any one time; or, the site is a Small Quantity Generator if the site met all other criteria for a Conditionally Exempt Small Quantity Generator, but accumulated, at any time, more than 1,000 kg (2,200 lbs.) of RCRA hazardous waste.

Large Quantity Generators (LQG) generate, in any calendar month, 1,000 kg (2,200 lbs.) or more of RCRA hazardous waste; or generate, in any calendar month, or accumulated at any time, more than 1 kg (2.2 lbs.) of RCRA acute hazardous waste; or generate, in any calendar month, or accumulated at any time, more than 100 kg (220 lbs.) of spill cleanup material contaminated with RCRA acute hazardous waste.

HWSTSD Hazardous Waste Sites- Treatment, Storage & Disposal

VERSION DATE: 06/30/03

The Resource Conservation and Recovery Act (RCRA) was enacted by congress in 1976, followed by the promulgation of implementing regulations in 1980. In 1984, the State was authorized by EPA to implement the RCRA program in Colorado on their behalf. TSD facilities treat, store, dispose, or recycle hazardous waste on site in units and therefore are subject to RCRA permitting requirements. Historic TSDs are facilities that have completed closure and/or post-closure of the RCRA Subtitle C Regulated Unit(s) or the Treatment/Storage/Disposal Unit is no longer regulated. This database was provided by the Colorado Department of Public Health and Environment in 2008, please contact the agency directly to verify current site details.

LST Leaking Storage Tank Facilities

VERSION DATE: 02/11/21

This database of aboveground and underground storage tank facilities with confirmed releases is a compilation of several lists maintained by the Colorado Department of Labor and Employment. Currently In Use, Never Installed/Existed, Never Installed-Permit Revoked, Not Regulated, Other, Pending Installation, Permanently Closed, Temporarily Out of Use tanks are included in this data. The next set of data is obtained from the Active

Environmental Records Definitions - STATE (CO)

and Closed OPS Petroleum Release Events in Colorado database. This data includes the OPS Open Event locations, but also shows locations of closed events (releases that have been issued a No Further Action determination). The Events data utilized in this database includes the following status types: Brownfield, Closed, Enforcement, LUST Trust, Open and State Lead. Please note some Events (confirmed releases) may not have a contaminant present.

LUSTTRUST Leaking Underground Storage Tanks Trust Fund Sites

VERSION DATE: 01/01/00

Suspected tank leaks have been discovered at the sites are included in this database, but the facility responsible for the leak has not been identified. The state's investigation and search for responsible parties is paid for out of the state's Leaking Underground Storage Tank (LUST) Trust Fund. This data was originally collected in 2002 from the Colorado Department of Labor & Employment, Division of Oil & Public Safety, State Fund Section by a former environmental database company known as Satisfi. Please refer to State LST database as source of current LUST Trust sites.

METHANESITES Methane Gas Study Sites

VERSION DATE: 01/01/81

This Investigation of Methane Gas Hazards report was prepared by the Denver Office of Emergency Preparedness in 1981. The purpose of this study was to assess the actual and potential generation, migration, explosive and related problems associated with specified landfills, and to identify existing and potential problems, suggested strategies to prevent, abate, and control such problems and recommend investigative and monitoring functions as may be deemed necessary. The Colorado Department of Health selected eight landfills as priorities due to population density and potential hazards to population and property.

RECYCLERS Registered Recycling Facilities

VERSION DATE: 09/01/19

This list of registered recycling facilities in Colorado is maintained by the Colorado Department of Public Health & Environment. This list includes primarily processing facilities for recyclable materials, such as: material recovery facilities, industrial recycling operations, and recyclable material end user sites. Collection centers/drop-off locations are not included unless the site is also processing recyclable materials (separating, sorting, dismantling, grinding, baling, etc.).

SF Superfund Sites

VERSION DATE: 12/10/20

This list of Superfund Sites is maintained by the Colorado Department of Public Health and Environment. This list contains active, deleted and proposed "Superfund" hazardous waste sites, as well as those sites identified through the Natural Resource Damages section of Superfund legislation and one Private Non-Superfund Cleanup site. A site qualifies for the National Priorities List (NPL or Superfund list) when the U.S. Environmental Protection Agency (EPA) determines there is a release or threatened release of hazardous substances that may

Environmental Records Definitions - STATE (CO)

endanger public health, welfare or the environment. In Colorado, the lead agency for Superfund remediation may be either the EPA or the Colorado Department of Public Health and Environment.

SPILLS Spills Listing

VERSION DATE: 02/28/21

The Colorado Department of Public Health and Environment's Division of Emergency Preparedness and Response maintains this listing of chemical spills and/or releases.

SWF Solid Waste Facilities

VERSION DATE: 09/11/20

The Colorado Department of Public Health and Environment maintains this database of solid waste disposal facilities, transfer stations, recyclers, waste tire registrants, and waste grease registrants. As of 11-6-19, the Waste Grease list has been discontinued and no new sites will be added as waste grease.

UMTS Uranium Mill Tailings Sites

VERSION DATE: 08/09/02

There were nine uranium mill tailings sites in Colorado designated for cleanup under the federal Uranium Mill Tailings Radiation Control Act (UMTRA). These nine sites, know commonly as UMTRA sites, were remediated jointly by the State of Colorado and the U.S. Department of Energy during the late 1980's and early 1990's. Mill tailings were removed from 8 of the mill sites and relocated in engineered disposal cells. A disposal cell is designed to encapsulate the material, reduce radon emanation, and prevent the movement of water through the material. At one site, Maybell, CO, the tailings were stabilized in-place at the mill site. After remediation of the tailings was completed, the State and DOE began to investigate the residual impacts to groundwater at the mill sites. The groundwater phase of the UMTRA program is on-going. This database was provided by the Colorado Department of Public Health and Environment in 2008, please contact the agency directly to verify current site details.

UST Underground Storage Tank Facilities

VERSION DATE: 01/04/21

This list of underground storage tank (UST) facilities is maintained by the Colorado Department of Public Health and Environment. Types of tanks included are: currently in use, never installed/existed, never installed-permit revoked, not regulated, other, pending installation, permanently closed, temporarily out of use.

VCRA Voluntary Cleanup and Redevelopment Program Sites

VERSION DATE: 02/12/21

This list of Voluntary Cleanup and Redevelopment Program Sites is maintained by the Colorado Department of Public Health and Environment (CDPHE) and includes both voluntary cleanup and brownfield properties. The

Environmental Records Definitions - STATE (CO)

Voluntary Cleanup and Redevelopment program was created in 1994. The objective of the program is to facilitate the redevelopment and transfer of contaminated properties. Properties that sit untouched because of their real or perceived contamination can be rehabilitated using the CDPHE's Brownfields Program in conjunction with the Voluntary Cleanup Program. Cleanup decisions are based on existing standards and the proposed use of the property. The actual cleanup and verification is the owner's responsibility.

Environmental Records Definitions - TRIBAL

INDIANRES

Indian Reservations

VERSION DATE: 09/27/17

This database is extracted from select geographic and cartographic information from the U.S. Census Bureau. The Bureau of Indian Affairs (BIA) within the U.S. Department of the Interior (DOI) provides the list of federally recognized tribes. The American Indian/Alaska Native/Native Hawaiian (AIANNH) Areas includes the following legal entities: federally recognized American Indian reservations and off-reservation trust land areas, state-recognized American Indian reservations, and Hawaiian home lands (HHLs). The boundaries for federally recognized American Indian reservations and off-reservation trust lands are as of January 2017. The boundaries for state-recognized American Indian reservations and for state designated tribal statistical areas were delineated by state governor-appointed liaisons for the 2010 Census through the State American Indian Reservation Program and Tribal Statistical Areas Program respectively.

LUSTR08

Leaking Underground Storage Tanks On Tribal Lands

VERSION DATE: 10/09/20

This database, provided by the United States Environmental Protection Agency (EPA), contains leaking underground storage tanks on Tribal lands located in EPA Region 8. This region includes the following states: Colorado, Montana, North Dakota, South Dakota, Utah, and Wyoming.

ODINDIAN

Open Dump Inventory on Tribal Lands

VERSION DATE: 11/08/06

This Indian Health Service database contains information about facilities and sites on tribal lands where solid waste is disposed of, which are not sanitary landfills or hazardous waste disposal facilities, and which meet the criteria promulgated under section 4004 of the Solid Waste Disposal Act (42 U.S.C. 6944).

USTR08

Underground Storage Tanks On Tribal Lands

VERSION DATE: 04/14/20

This database, provided by the United States Environmental Protection Agency (EPA), contains underground storage tanks on Tribal lands located in EPA Region 8. This region includes the following states: Colorado, Montana, North Dakota, South Dakota, Utah, and Wyoming.